

Index Returns

Year-to-Date

As of 10/21 close

S&P 500: -20.25%

Dow Jones: -13.04%

Nasdaq: -30.16%

Agg Bond: -16.74%

Muni Bond: -10.75%

Small Cap: -21.58%

Int'l Stock: -25.93%

Compass Market Minute



Click [here](#) for the most recent Compass Market Minute

Have questions about your portfolio? Contact a member of our Asset Management Team!



EWM A.M. Cup of Joe

ASSET MANAGEMENT

Edition 33 – Week of October 24th



Our weekly blend of information to help keep you alert so you can stay the course and maintain your path using EWM as your COMPASS.

I. The Beans – The foundation of this week's analysis



The Grounds – Pathway of the market

Key Point: The broad equity market showed strength as 11 out of 11 sectors finished positive on the week.

- *What does that mean for me?* – The stock market is moving off the October bottom and may have already reached the lowest level for 2022.



The Brew – Economic Drivers

Key Point: The Fed's interest rate policy has resulted in the 30-year mortgage rate increasing to a multi-decade high.

- *How that may affect you* – The cost to borrow money has increased to the point where consumers have slowed down their purchasing of new homes.

II. The Aroma – Highlights of market activity



Broad Market Analysis - Potential direction of the market

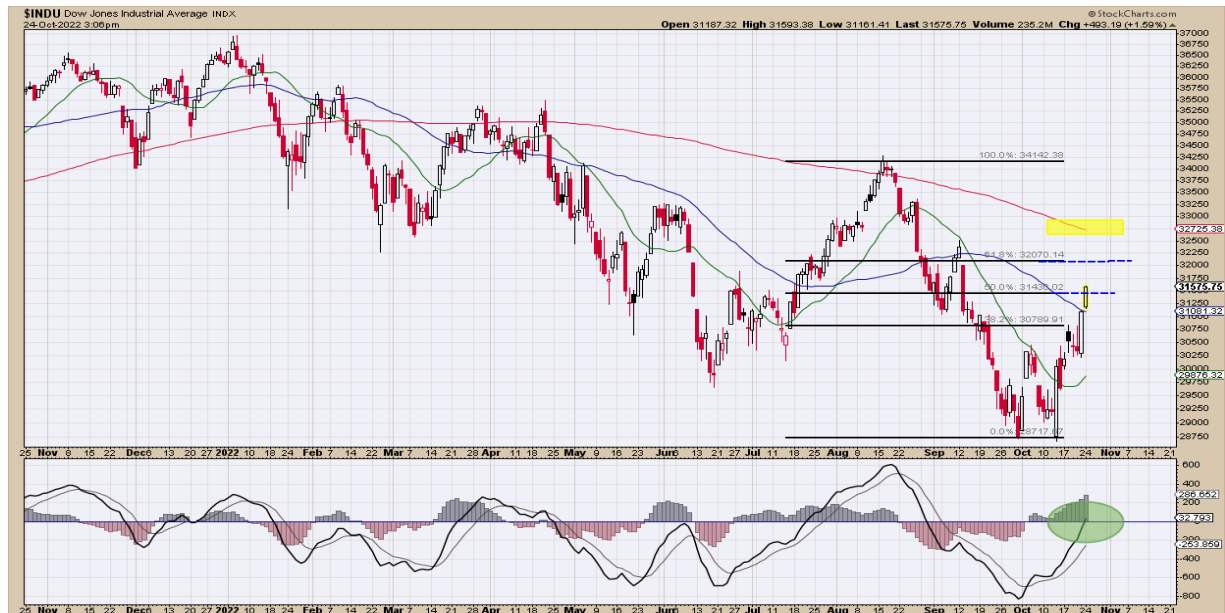
Key Point: The Dow Jones has broken through an important level (blue dotted line) and is approaching another area 4% higher (yellow box [200 day moving average]).

What does that mean? – The bottom indicator (green circle) is crossing an important line, signifying that the move higher on the Dow is accompanied with strength and momentum. This could mean the worst is behind us in the stock market.

Chart Name – Dow Jones

Chart Type – Daily

Chart Period – 1 year



III. The Cream & Sugar – The road EWM has taken



What We're Doing – **The following activity is not necessarily representative of every client portfolio whether positive or negative*

Legend	
Buy	New holding
Sell	Sell All
Trim	Sell Percent
Add	Increase Holding

Security	Action	Description
No New Action	-	-

Disclosures

Information presented is believed to be factual and up to date, but we do not guarantee its accuracy and it should not be regarded as a complete analysis of the subjects discussed. All expressions of opinion reflect the judgment of the author/presenter as of the date of publication and are subject to change and do not constitute personalized investment advice. A professional advisor should be consulted before implementing any investment strategy. Investments are subject to market risks and potential loss of principal invested, and all investment strategies likewise have the potential for profit or loss. Past performance may not be indicative of future results. No current or prospective client should assume that the future performance of any specific investment, investment strategy (including investments and/or investment strategies recommended by the advisor), will be equal to past performance levels. The information presented herein is intended for educational purposes only and is in no way intended to be interpreted as investment advice. Any charts, graphs, or visual aids presented herein are intended to demonstrate concepts. These visual aids should not in any way be interpreted as a device with which to ascertain investment decisions or an investment approach. Technical Analysis is a form of research that cannot guarantee any sort of outcome. EWM considers this a form that is any better than any other sort of due diligence including Fundamental Analysis. Do not consider this video to be a solicitation to buy or sell any security or investment. No content should be construed as an offer to buy or sell, or a solicitation of any offer to buy or sell any securities mentioned herein. Econ Wealth Management does not represent, warranty, or imply that the services or methods of analysis employed by the Firm can or will predict future results, successfully identify market tops or bottoms, or insulate clients from losses due to market corrections or declines. ETFs combine features of a mutual fund, which can be purchased or redeemed at the end of each trading day at its NAV per share, with the intraday trading feature of a closed-end fund, whose shares trade throughout the trading day at market prices. An ETF's market price may trade at a premium or a discount to its underlying value. Before investing in an ETF, you should read both its summary prospectus and its full prospectus, which provide detailed information on the ETF's investment objective, principal investment strategies, risks, costs, and historical performance (if any).

Chart of the Week – Holding Highlight



Moving Averages (MA)

20-day	Green
50-day	Blue

*Courtesy of StockCharts.com

NAME	BAKER HUGHES, CO. (BKR)
SECTOR	Energy
INDUSTRY	Energy Equipment & Services
ANALYSIS	<ul style="list-style-type: none"> • Baker Hughes Co. engages in the provision of oilfield products, services, and digital solutions. • Energy remains the only sector with positive gains year-to-date. With oil barrel prices decreasing, companies like BKR could start to slowdown. • BKR recently reporting earnings causing the jump in price last week. With earnings being better than anticipated, BKR has broken the 50-day moving average (blue) and could continue higher.

IV. The Double Shot of Espresso – Information to boost your Cup of Joe



- Read J.P. Morgan's "[Weekly Market Recap](#)" for their latest update
- Read TD Ameritrade's "[Macro Monday](#)" for an insight into technical analysis

4755 Linglestown Rd. Ste. 204 Linglestown, PA 17112

258 E. Main St. Hummelstown, PA 17036

(717)-545-5870

