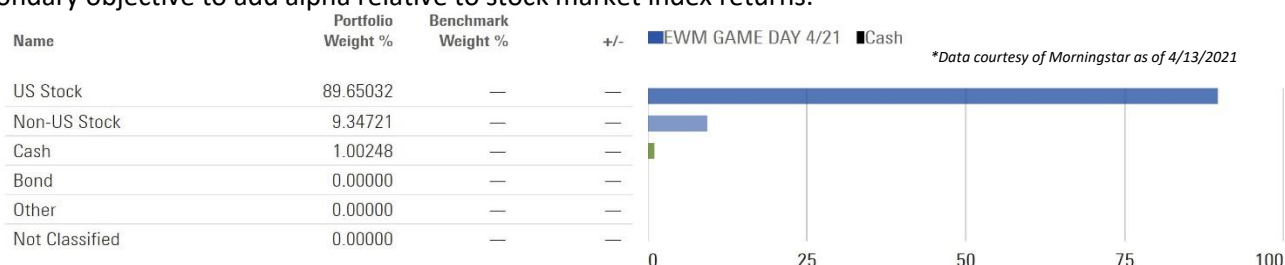


# EWM GAME DAY Allocation

As of March 31, 2021 CLEAR Experience

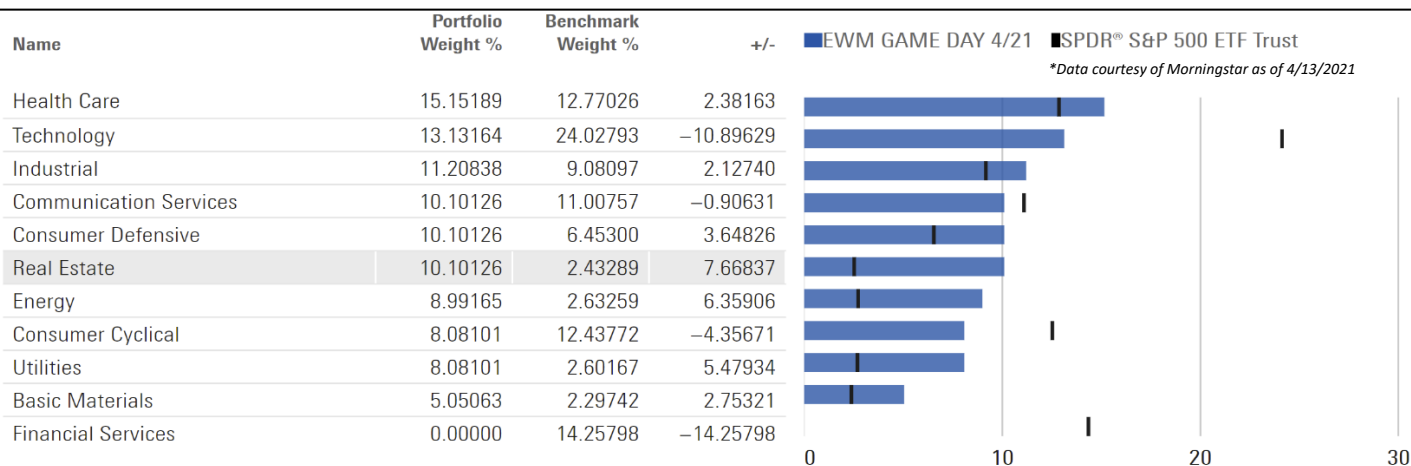
## Allocation Objective

Dividend-focused with the goal of holding individual stocks long-term with the flexibility to take short-term gains. The primary objective is to provide a range of diversified positions with a target yield of greater than 3% and a secondary objective to add alpha relative to stock market index returns.



## Allocation Details

GAME DAY is focused on owning diversified stocks across all asset classes and sectors to build a stand-alone portfolio. ETFs are permitted if certain criteria are met based on the Investment Management Team's (IMT) analysis. The allocation is comprised of approximately 15-20 holdings with a general overall weighting of each position in the allocation to be between 2 and 6 percent.



## Allocation Characteristics

EWM's GAME Day allocation encompasses all asset levels & classes, primarily targeting stocks with the goal to outperform the S&P 500. Using our technical analysis & sector rotation, the IMT varies sector weights to reflect changes in leading and lagging areas.

\*Data courtesy of Morningstar as of 4/13/2021



- ❖ Portfolio Weighted Dividend: 3.96%
- ❖ Current Number of Holdings: 21
- ❖ Defensive: 25.77%
- ❖ Sensitive: 53.85%
- ❖ Cyclical: 20.88%

# EWM GAME DAY Allocation

As of March 31, 2021 CLEAR Experience

## Top 10 Holdings

Name	Ticker	Weight %
<b>EWM GAME DAY 4/21</b>	—	<b>100.00000</b>
<b>Unallocated Cash</b>		<b>1.00000</b>
1 Gilead Sciences Inc	GILD	6.00000
2 Raytheon Technologies Corp	RTX	6.00000
3 International Business Machines Corp	IBM	5.00000
4 Verizon Communications Inc	VZ	5.00000
5 AT&T Inc	T	5.00000
6 Vale SA ADR	VALE	5.00000
7 ACCO Brands Corp	ACCO	5.00000
8 STORE Capital Corp	STOR	5.00000
9 Omega Healthcare Investors Inc	OHI	5.00000
10 Schlumberger Ltd	SLB	5.00000

*Portfolio Analyst Note*

\*Data courtesy of Morningstar as of 4/13/2021

## Meet the Investment Management Team

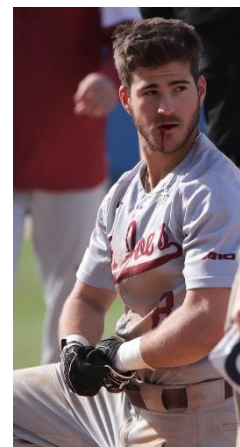
The Investment Management Team at Econ Wealth is comprised of several professionals with designations including CMT™, CFP™, AAMS™ & ChFC. The team is led by Chief Investment Strategist Steve Economopoulos and supported by Brian Zellers, Director of Investment Management. The staff also includes Portfolio Analysts to help facilitate the research and the creation of these funds.



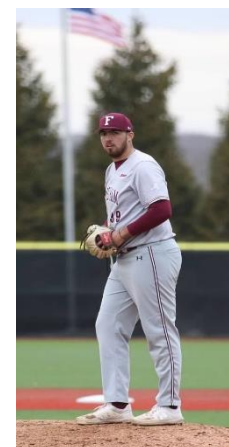
*Steve Economopoulos, CMT™, ChFC, CFP™*  
Chief Investment Strategist



*Brian Zellers, AAMS™*  
Director of Investment Management



*Jake Artz*  
Portfolio Analyst



*Tony Zimmerman*  
Portfolio Analyst

*EWM offers a wide variety of portfolios to meet different goals and risks. Please reference our EWM Portfolio Guide to learn more about these options.*



Asset/Portfolio allocation cannot eliminate the risk of fluctuating prices and uncertain returns. Our investment management process is not designed for excessively traded or inactive accounts and may not be suitable for all investors. Yield is not guaranteed and is a result of the average of the investments held ongoing. Stocks offer long-term growth potential but may fluctuate more and provide less current income than other investments. An investment in the stock market should be made with an understanding of the risks associated with common stocks, including market fluctuations. Technical analysis is only one form of analysis. Investors should also consider the merits of Fundamental and Quantitative analysis when making investment decisions. Technical analysis is based on the study of historical price movements and past trend patterns. There is no assurance that these movements or trends can or will be duplicated in the future. Past performance is not a guarantee of future results. Cost to expense and investment expense ratios impact your return and should be evaluated before investing. Econ Wealth Management cannot fully eliminate risk nor guarantee results will be met to match your plan. See the EWM ADV and the CLEAR Understanding of EWM Cost and Services Guide for further information. The allocations presented are actively reviewed and can be modified with discretion.